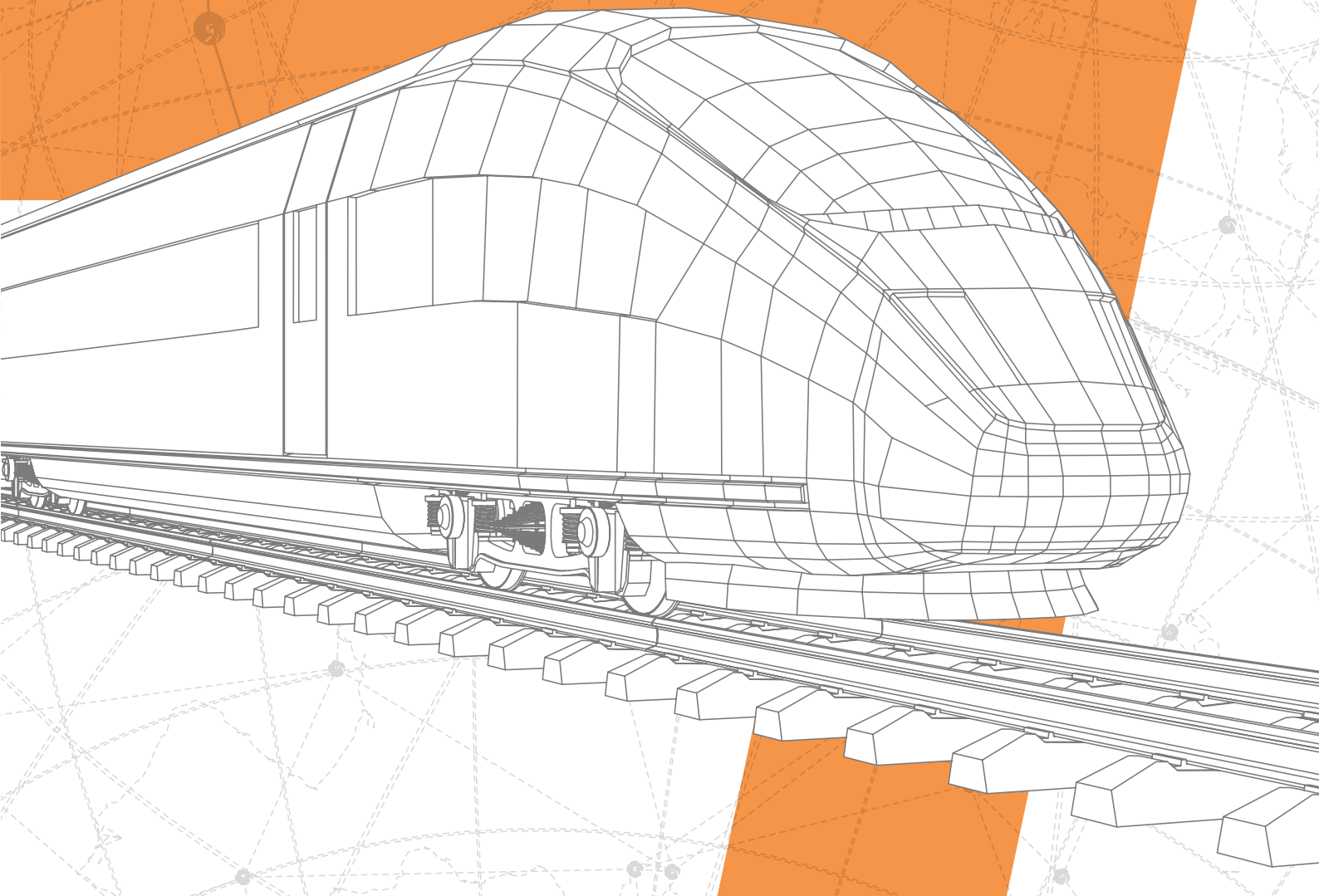


Maps Cloud
Data Real-time
Asset Location
Knowledge
EVA+ Project Management



BUSINESS DOMAINS

EVA+ IS A MODULAR CLOUD-BASED SOFTWARE SOLUTION FOR REAL-TIME DATA ACQUISITION, PROCESSING AND ANALYSIS OF TELOC® EVENT RECORDER DATA, OPTIMIZING TRAIN OPERATIONS, SUPPORTING MAINTENANCE ACTIVITIES AND INCIDENT INVESTIGATIONS.

MAINTENANCE

- Diagnose problems remotely, reducing the occurrence of "no fault found" outcomes
- Improve your fleet's overall reliability

OPERATIONS

- Monitor both technical and human behaviours in real time
- Get real time geo-information on your whole fleet
- Geo-locate potential problems with ease - facilitating faster 'fixes'

SAFETY

- Improve your safety record via real-time alarms and event prevention mechanisms
- Monitor safety processes from a central dashboard for increased efficiency

LEGAL

- Prove full compliance with all legal requirements and legislative measures
- Produce more accurate and informative incident and accident investigation reports

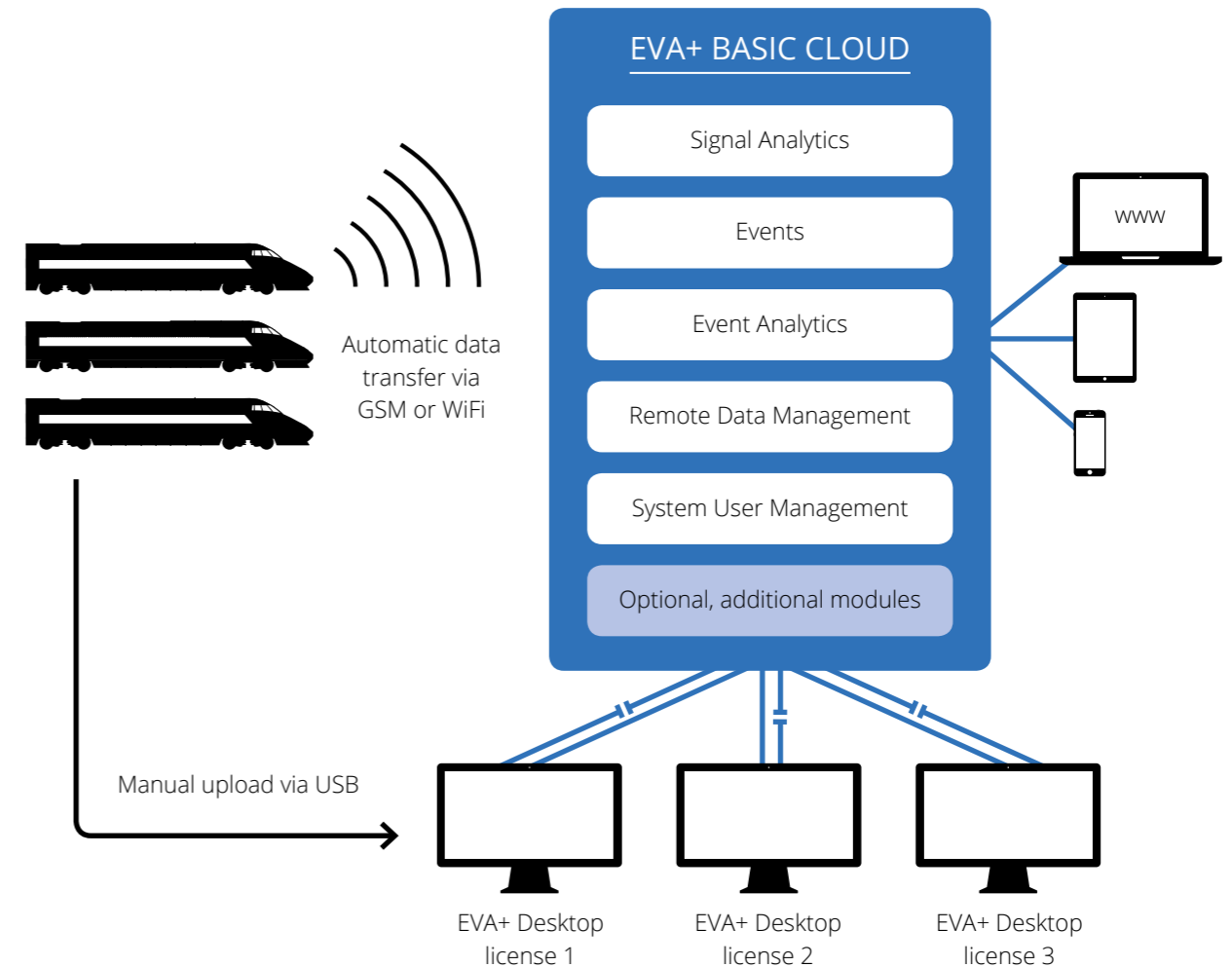
PERFORMANCE

- Access near real-time information processing
- Monitor and increase fleet punctuality
- Monitor and streamline service availability processes

ENERGY

- Monitor and measure energy consumption
- Streamline energy-related reporting and billing

With EVA+ our customers gain access to a wealth of actionable information, all through a single, intuitive desktop or cloud-based user interface that is as multifaceted as any company could want or need, but boasts a learning curve that is gentle enough to be mastered by all levels of users.



EVA+ Architecture



Measurement and evaluation of recorded analogue and / or digital signal.

VALUE PROPOSITION

WHAT EVA+ CAN DO FOR YOU

It's not enough to know that EVA+ is a great software product, or how impressive its specs and capabilities are. You need to know what EVA+ can do for you.

INCREASE UPTIME

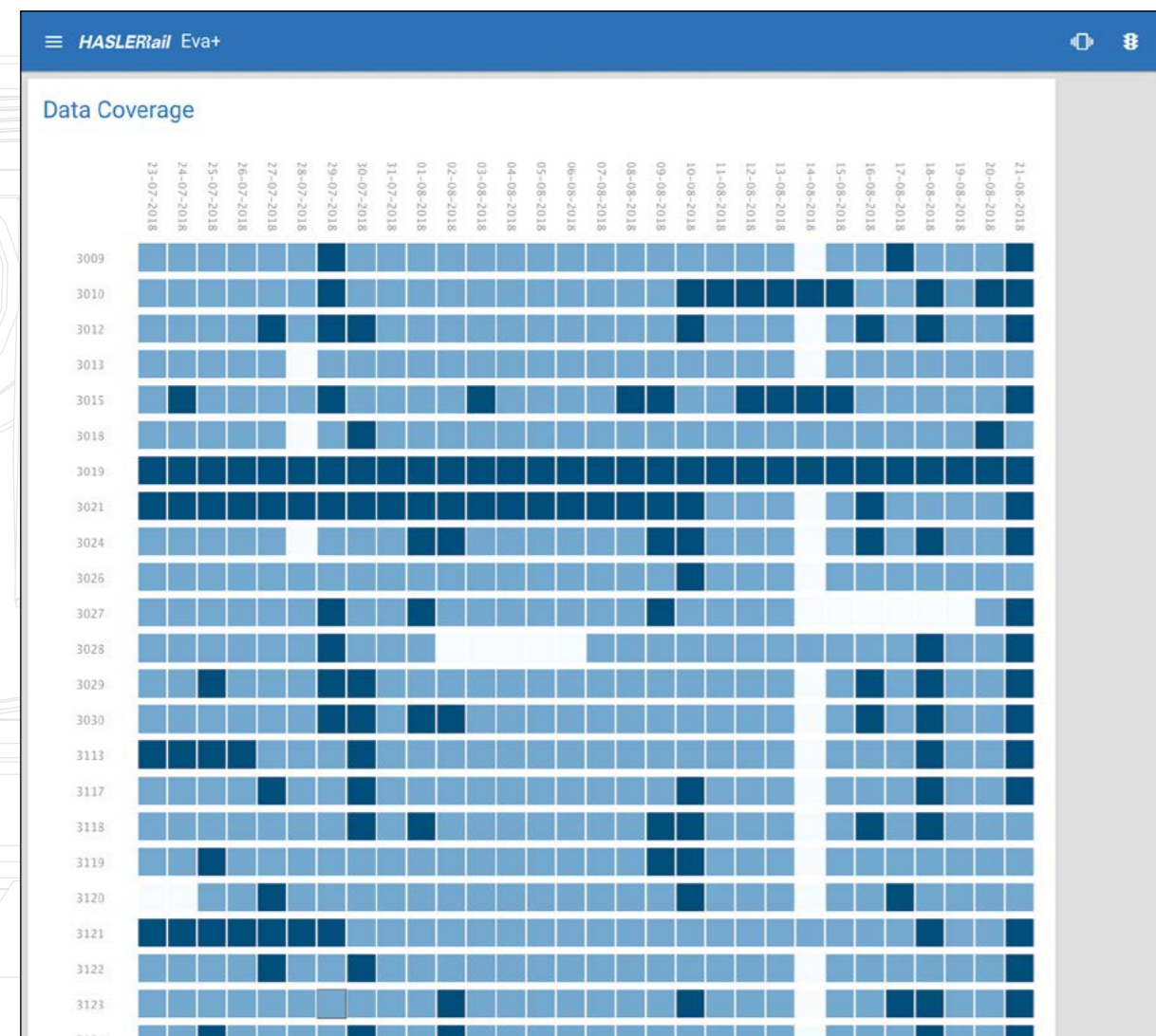
Utilizing EVA+ to significantly reduce reaction times on system failures will boost service uptime, leading to improved, more reliable service offerings that will impress your customers and boost your bottom line. A dispatcher can identify approaching vehicles in order to reroute them. Maintenance personnel can find a blocking vehicle faster and diagnose errors before arriving on site.

REDUCE IDLE TIME

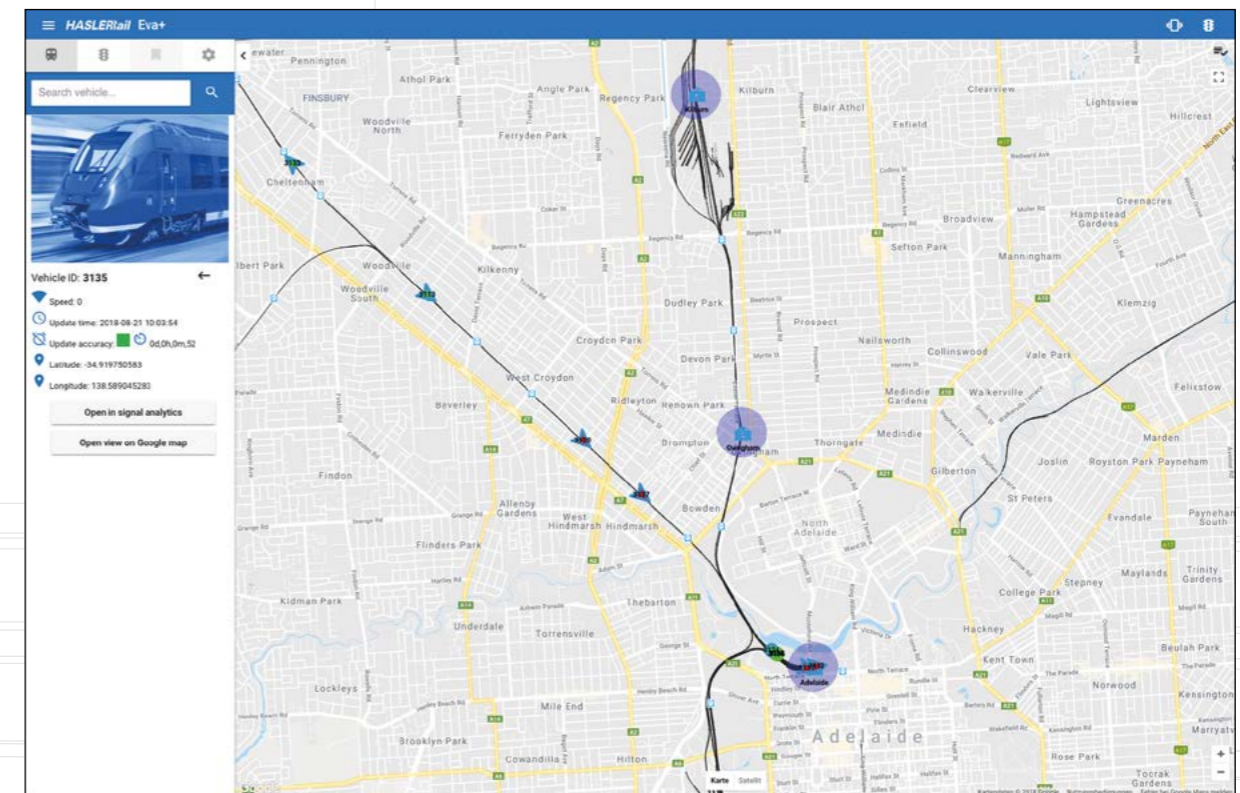
Idle vehicles don't generate income. EVA+ helps to improve the performance of your fleet by analyzing idle times related to infrastructure elements.

PROVE COMPLIANCE

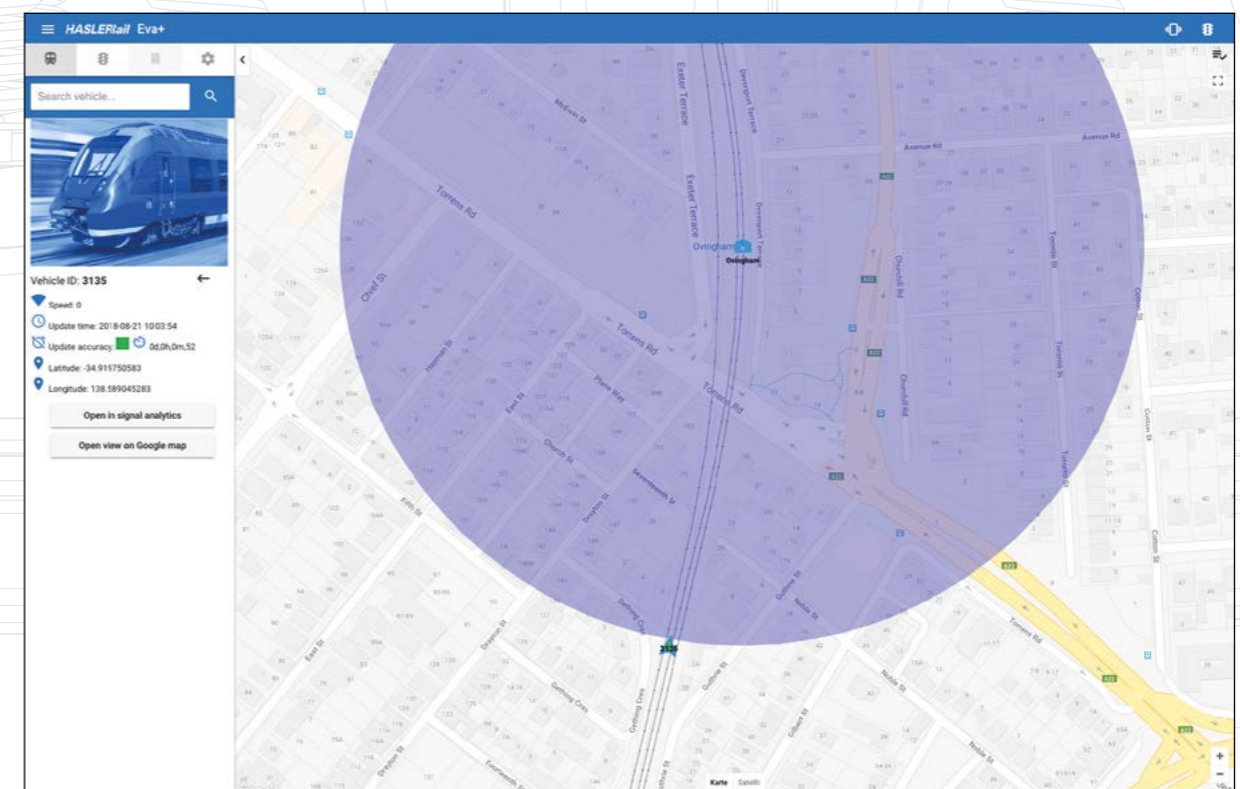
EVA+ allows you to create statistics about recorded events in order to prove the compliance of your fleet and drivers such as respecting speed limits, finding the root cause of service interruptions due to emergency braking etc.



Data Coverage



Live Fleet Location



Vehicle Enters Geofence

SUCCESS STORY

SUCCESSFUL DRIVER MANAGEMENT AT C2C UK

c2c, www.c2c-online.co.uk is a British train operating company which provides passenger services in East London and South Essex. c2c uses EVA+ to analyse real-time data retrieved from their Class 357 and Class 387 Electrostar vehicles which are equipped with TELOC® 3000 Event Recorders.

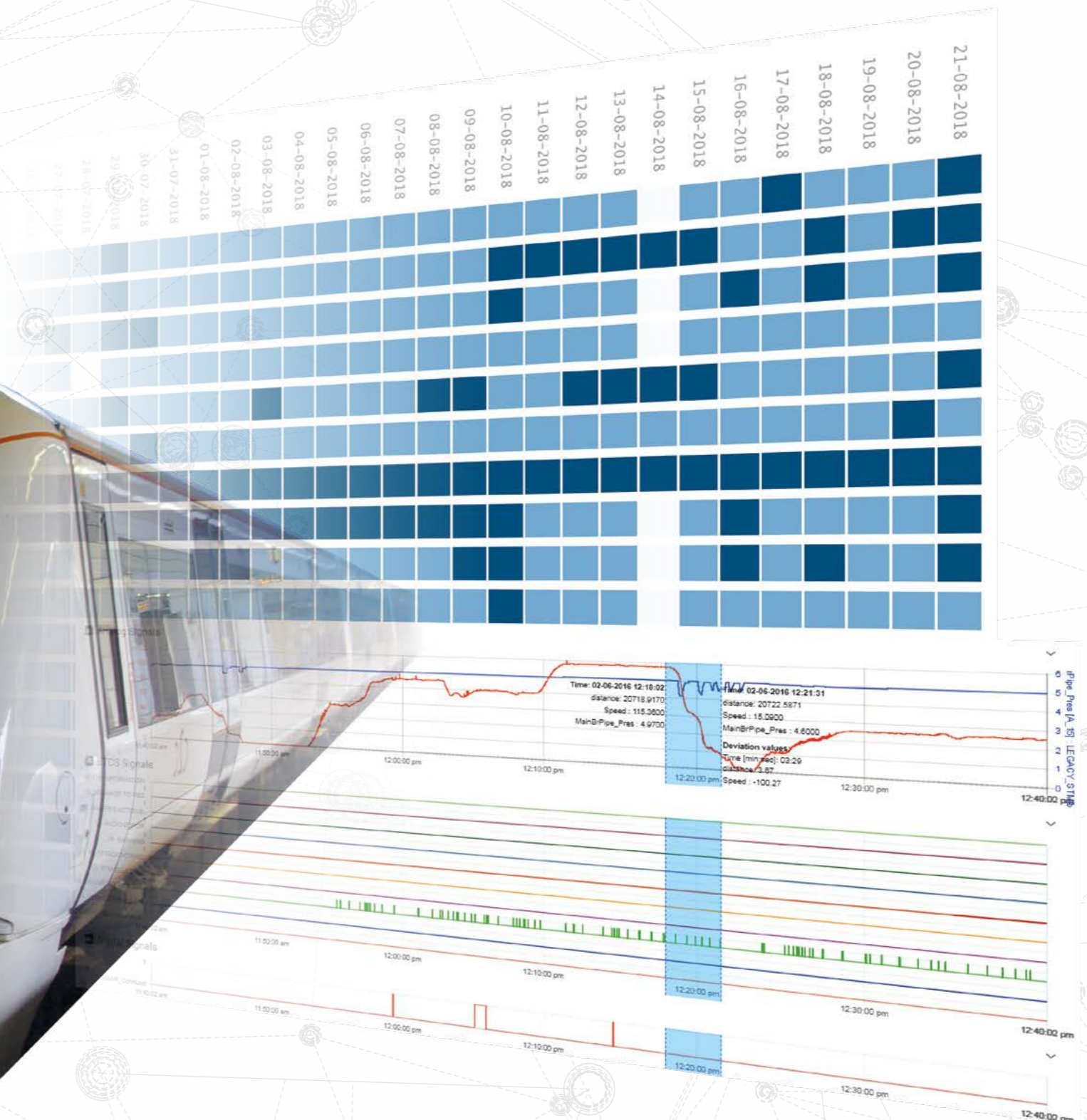
To ensure optimal passenger service and safety, driver managers use EVA+ to regularly assess their drivers. All parameters are used to measure a driver's style against how they were trained to correct bad habits. In the case of incidents or delays, time in cab and set up time, time between stations (SRT), time at stations (dwell times), speed and door opening side are reviewed.

When special events occur during train operation, such as emergency brake application (possibly indicating a safety system has operated), EVA+ notifies the responsible staff in real-time, this allows a quick response and thus reduces the risk of delays.



C2C UK

Photo: Martin Addison



YOUR GLOBAL PARTNER WITH LOCAL SUPPORT



- Headquarters and Offices
- Agencies

HASLERRail

HaslerRail AG
Freiburgstrasse 251
3018 Berne
Switzerland

T +41 (0) 31 990 71 11
F +41 (0) 31 990 72 27
info@haslerrail.com
www.haslerrail.com

Sécheron Hasler GROUP

Smart. Safe. Swiss.